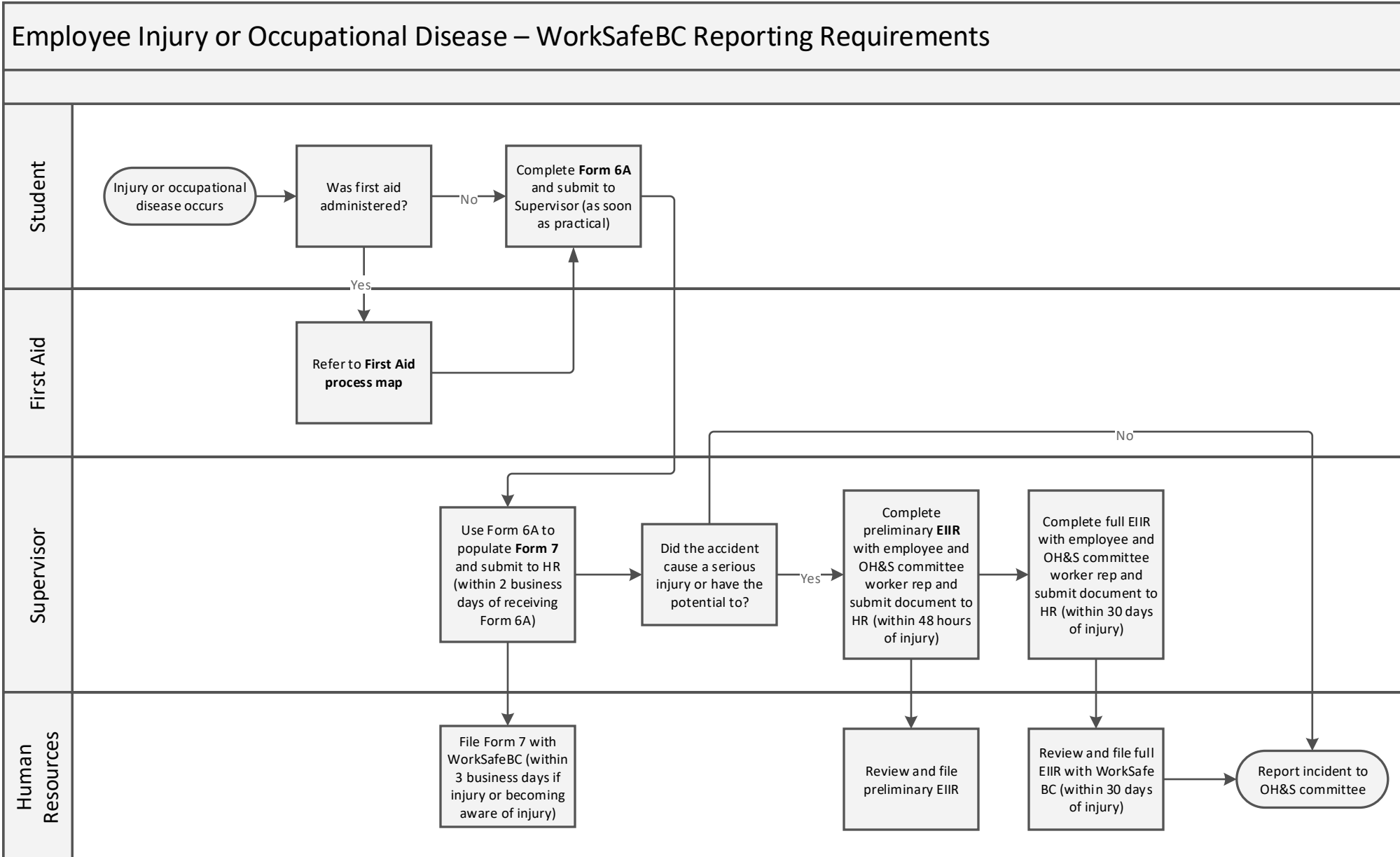


OH&S Process Map



Resources:

Form 6A: Worker's Report of Injury or Occupational Disease To Employer (form 6A).

Form 7: Employer's Report of Injury or Occupational Disease (form 7).

First Aid process map: OH&S process map found on CMTN website or SharePoint porta under Health & Safety topics.

EIIR: Employer incident investigation report (Guide to Completing an Employer Incident Investigation Report (EIIR)).